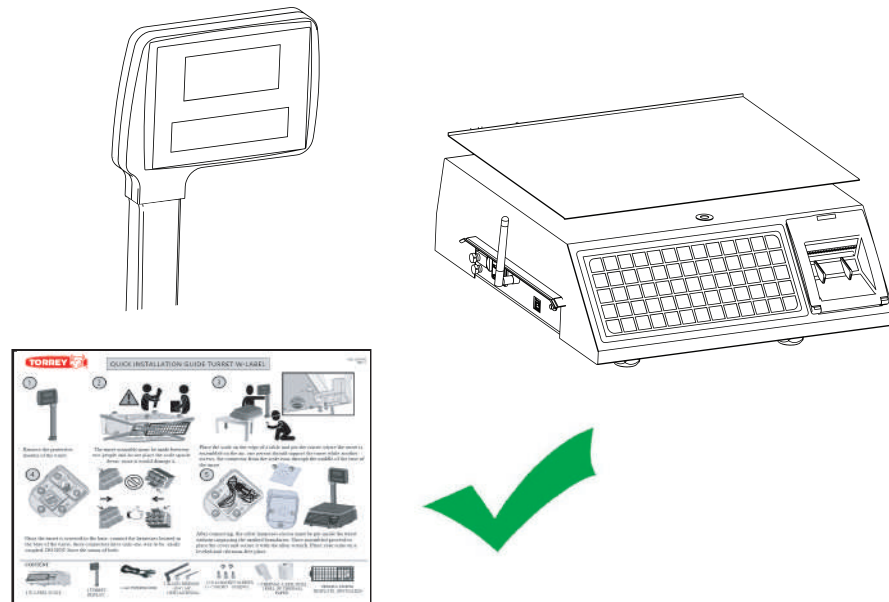


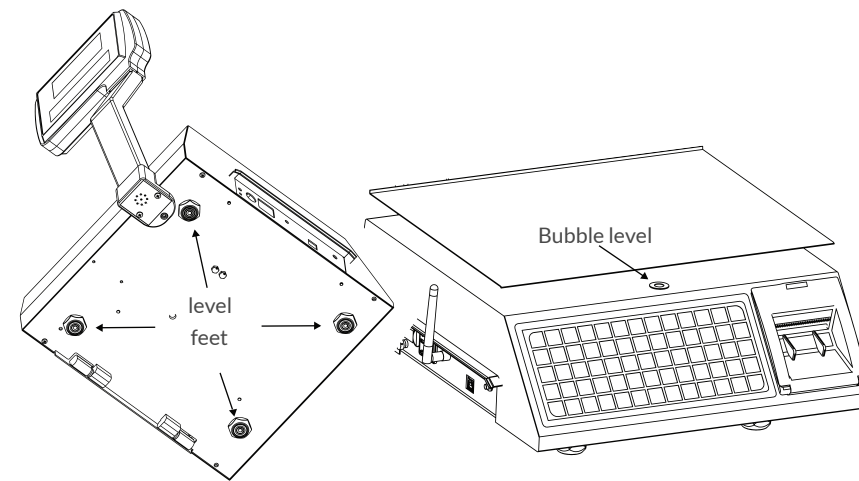
## 1 Assembly of the upright support

Assemble the upright support in the W-label scale.  
Use the "assembly guide" (131000764) kept inside in the packing box.



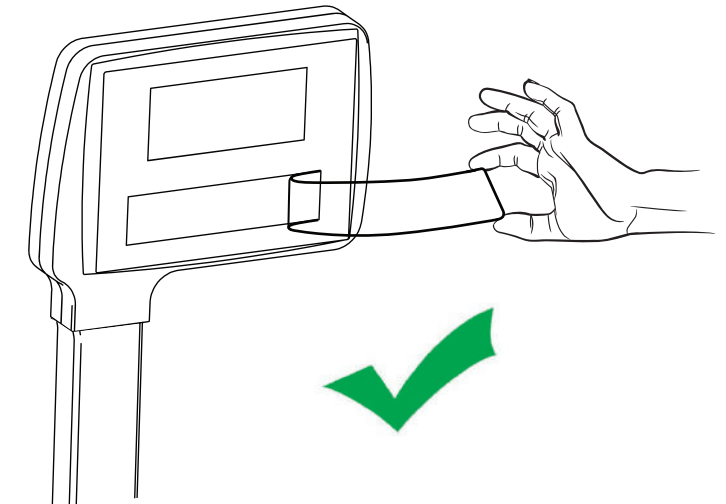
## 2 Level the scale

Adjust the level feet from down the scale, carefully make sure the level bubble indicator stays centered.



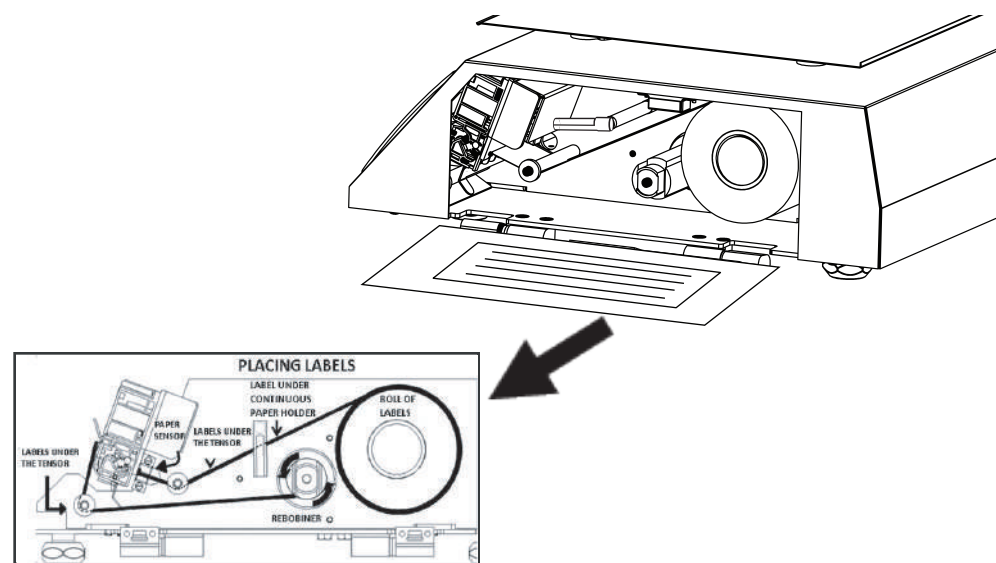
## 3 Remove plastic cover from the display

Remove the plastic cover from the display like shown in figure.



## 4 Place the paper roll

Make sure that paper roll or label roll is on the correct position. Use the help guide on the lateral door from the W-label scale.

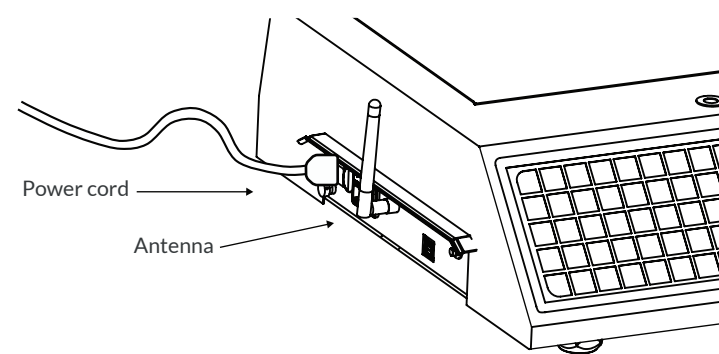


Help for placing paper roll.

## 5 Power cord and Wi-Fi antenna

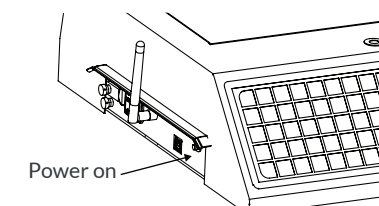
Screw the Wi-Fi antenna on the threaded connector by hand, please do not use tweezers.

Place the power cord in the socket

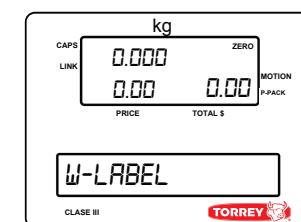


## 6 Turn on / Turn off

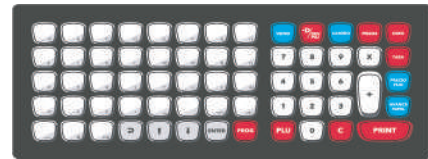
Press the button for 3 seconds to turn on/off the scale.



The scale will be ready to use when zeros appear in the 3 sections of the upper display.



## 7 Create a Product



1.- Press the PROG key.



2.- Enter the password: 123456

3.- Use the direction keys to navigate through the menu and select "2 PRODUCTS".



Select CREATE PRODUCT:

2 PRODUCTS → CREATE PRODUCT

4.- Save the info of your new product.



## 8 Quick shortcuts

1.- Create a product as in section 7.

2 PRODUCTS → CREATE PRODUCT

2.- Navigate to "Assign key" and select the key that will be the quick shortcut.

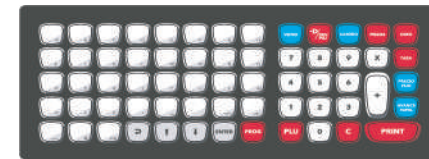
or

1.- Edit a product.

2 PRODUCTS → EDIT PRODUCT

2.- Navigate to "Assign key" and select the key that will be the quick shortcut.

3.- Save the changes.



## 9 Headers

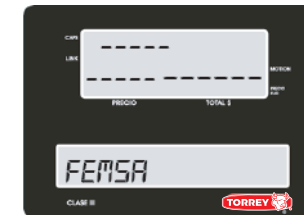
1.- Follow the first two steps of section 7.

2.- Select "HEADERS".

4 PRINTER → HEADERS

3.- Modify the header text.

4.- Save the changes.



## 11 Print a label

Verify that the "OPERATION MODE" is active for "LABEL" CONFIGURATI → 1GENERAL.

1.- Place the item you want to weigh on the scale pan, write the price of the item or select the desired product.

2.- Press the key PRINT.



## 12 Print ticket and include change

Verify that the "OPERATION MODE" is active for "TICKET" CONFIGURACIO → 1GENERAL.

1.- Select a product.

2.- Press the add key →



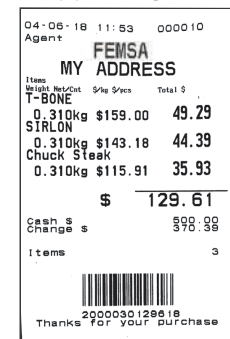
3.- Repeat steps 1 and 2 to add more products.

4.- At the end press the "CHANGE" key,



5.- Enter cash amount.

6.- Print the ticket by pressing the key.



## 13 Print reports

1.- Follow the first two steps of section 7.

2.- Navigate to option "5 SALES"

3.- Select the desired report:

- \* TOTAL SALE
- \* SALES BY PLU
- \* SALES BY AGENT

4.- Print the report by pressing the key



Important: The reports will only be printed with ticket roll.



## 10 Advertisement messages

1.- Follow the first two steps of section 7.

2.- Select advertisement messages  
1GENERAL → ADVERTISEMENT MESSAGES

3.- Choose the message that you want appear in the display.

4.- Save the changes.



## 14 ScaleLink for PC and mobile app

Manage the configuration and the data transmitted in the scales as products, messages, offers additional information and sellers from your PC.

PC software download link  
<http://www.torrey-cloud.com/downloads/usa>

Download the ScaleLink app available for Android and iOS devices.

APP FEATURES:

- \* Configuration of products, sellers, offers, etc.
- \* Advertising message settings
- \* Label and barcode settings
- \* Sales reports:
  - By day
  - By product
  - By seller
- \* Cash register balance
- \* Configuration of shortcuts
- \* And more...

